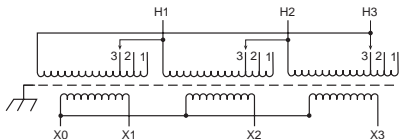


**PRIMARY: 575 Volts Delta**  
**SECONDARY: 230Y/133 Volts**  
**TAPS: 1-5% ANFC and BNFC**



Primary Volts	%	Connect Leads to Tap No.
604	105	1
575	100	2
546	95	3
Secondary Volts		
230		X1, X2, X3
133 1 phase		X1 & X0 X2 & X0 X3 & X0